

La suspension Jiflor

Jiflor suspension

Jardinière: Polypropylène biosourcé (30% de coquille d'huitres) recyclable avec traitement anti-UV, réserve d'eau avec trop-plein et bouchon de vidange, grille de drainage amovible | **Options:** Bac de culture amovible en plastique recyclé et recyclable, support de fixation en polyamide renforcé ou en acier galvanisé, système pour arrosage automatique (débit lent) ou semi-automatique (débit rapide) | **Coloris:** Beige, sans colorant ajouté et sans traitement anti-UV, Vert feuillage et Gris anthracite

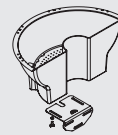
Flowerbox : Recyclable biobased polypropylene (30% oyster shell) with anti-UV treatment, water reserve with overflow and drain plug, drainage grid removable | **Options :** Removable recycled and recyclable plastic planting liner, fixing support in reinforced polyamide or in galvanized steel, automatic (low-flow) or semi-automatic (high-flow) watering system | **Colours :** Beige, no added colorant and ni anti-UV treatment, Green leaf and charcoal grey



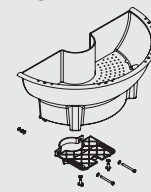
OPTIONS Option bac de culture
OPTIONS Culture tub in option



Support mural
Wall support

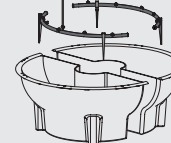


Mâts ronds / Mâts octogonaux
Round poles / Octogonal poles

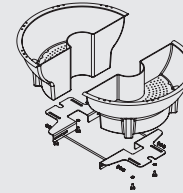


Version simple
Single version

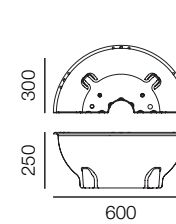
Système d'arrosage
Watering system



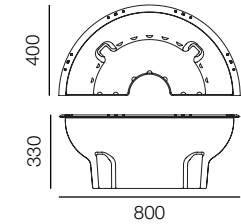
Mâts carrés / Poteaux béton
Square poles / Concrete post



Version double
Double version



Vol. Substrat - Substrate vol. : 16 l.
Vol. Eau - Water vol. : 5 l.
Poids - Weight : 2 kg



Vol. Substrat - Substrate vol. : 32 l.
Vol. Eau - Water vol. : 10 l.
Poids - Weight : 4 kg



Ø mâts Ø of the pole	Ø 44 - 66	Ø 67 - 89	Ø 90 - 115	Ø 116 - 135	Ø 136 - 158	Ø 159 - 181	Ø 182 - 205	Ø 206 - 228
Jiflor 600	0	A	B	/	/	/	/	/
Jiflor 800	/	A	B	C	D	E	F	G